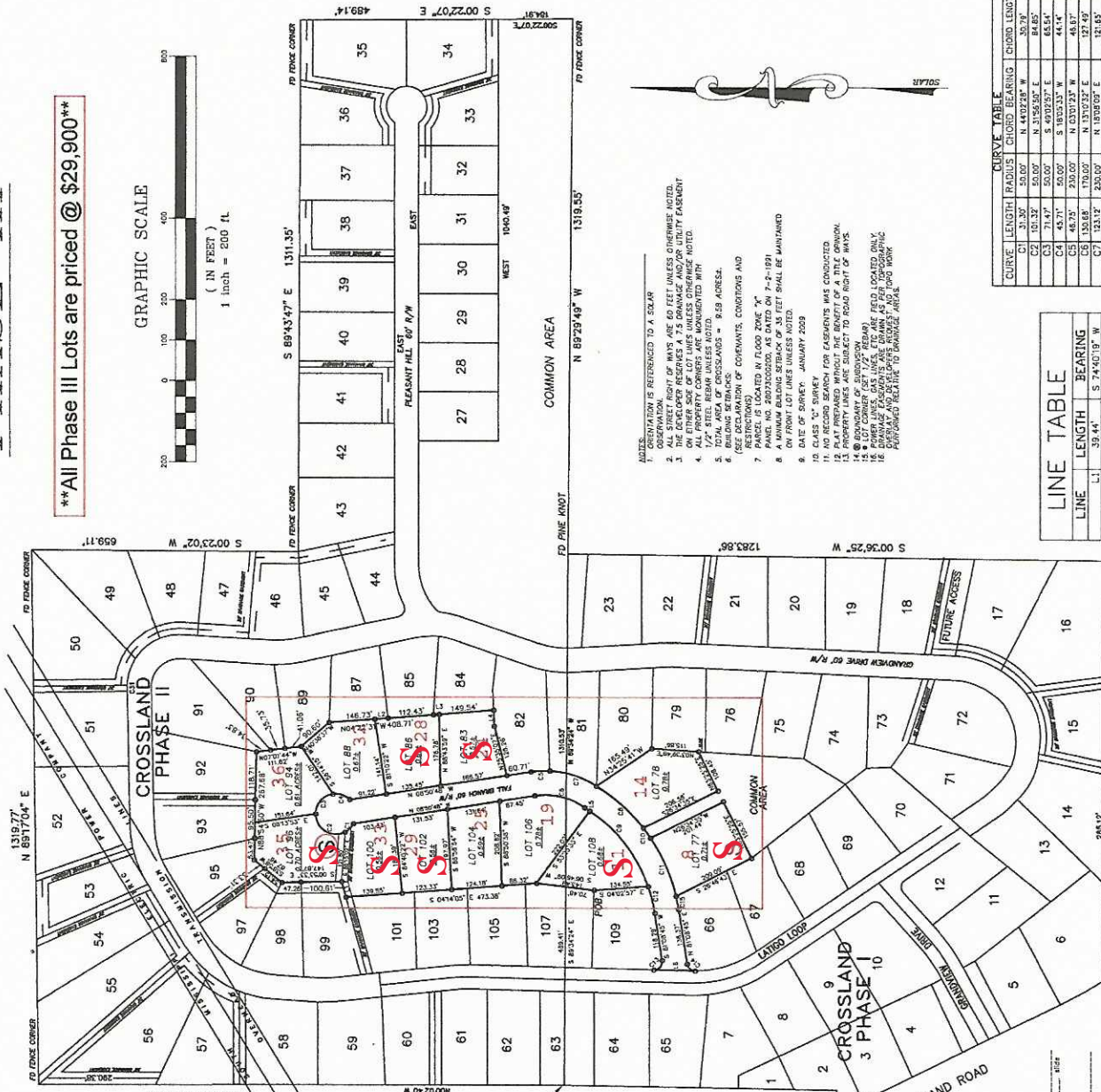
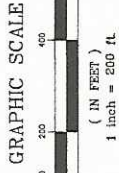


CROSSLAND SUBDIVISION PHASE III

****All Phase III Lots are priced @ \$29,900****



- NOTES:**
1. ORIENTATION IS REFERENCED TO A SOLAR
 2. ALL STREET RIGHT OF WAYS ARE 60 FEET UNLESS OTHERWISE NOTED.
 3. THE DEVELOPER RESERVES A 7.5 DRAINAGE AND/OR UTILITY EASEMENT
 4. ALL PROPERTY CORNERS ARE MONUMENTED WITH
 5. 1/2" STEEL REBAR UNLESS NOTED.
 6. BUILDING SETBACKS - SEE ASSOCIATED - RES. ADDRESS.
 7. (SEE DECLARATION OF COVENANTS, CONDITIONS AND RESTRICTIONS FOR FURTHER INFORMATION.)
 8. A MINIMUM BUILDING SETBACK OF 35 FEET SHALL BE MAINTAINED
 9. DATE OF SURVEY: JANUARY 2008
 10. CLASS "C" SURVEY
 11. NO RECORD SEARCH FOR EASEMENTS WAS CONDUCTED
 12. PLAT PREPARED WITHOUT THE BENEFIT OF A TITLE OPINION.
 13. THIS SURVEY IS SUBJECT TO ROAD RIGHT OF WAYS.
 14. BOUNDARY OF SUBDIVISION
 15. LOT CORNER SET 1/2" REBAR.
 16. DIMENSIONS AND BEARINGS ARE DRAWN AS PER PHOTOGRAPHIC SURVEYING METHODS AND ARE SUBJECT TO THE ACCURACY OF THE PHOTOGRAPHIC SURVEYING METHODS.

| CURVE | LENGTH | RADIUS | CHORD BEARING | CHORD LENGTH |
|-------|---------|---------|---------------|--------------|
| C1 | 31.30' | 50.00' | N 44°02'28" W | 30.79' |
| C2 | 10.32' | 50.00' | N 31°55'50" E | 18.85' |
| C3 | 71.47' | 50.00' | S 40°05'59" E | 65.41' |
| C4 | 45.71' | 50.00' | S 18°03'33" W | 44.14' |
| C5 | 159.18' | 100.00' | N 11°01'32" E | 121.60' |
| C6 | 124.12' | 200.00' | N 18°08'09" E | 121.65' |
| C7 | 156.07' | 400.00' | S 4°11'55" W | 155.92' |
| C8 | 235.41' | 370.00' | N 53°02'59" E | 235.52' |
| C9 | 30.44' | 400.00' | N 53°04'44" E | 30.43' |
| C10 | 30.44' | 400.00' | S 6°13'31" W | 156.00' |
| C11 | 157.37' | 400.00' | S 6°13'31" W | 156.00' |
| C12 | 87.93' | 200.00' | S 7°55'18" W | 87.80' |
| C13 | 38.03' | 200.00' | N 48°40'28" W | 38.72' |
| C14 | 33.90' | 400.00' | N 79°55'40" E | 33.93' |

| LINE | LENGTH | BEARING |
|------|---------|---------------|
| L1 | 39.44' | S 74°46'19" W |
| L2 | 32.83' | S 04°22'31" E |
| L3 | 13.92' | N 04°22'31" E |
| L4 | 38.23' | N 87°27'19" E |
| L5 | 14.72' | N 35°11'52" E |
| L6 | 122.92' | S 07°23'04" W |

Commence at a found Pine Knot marking the SE Corner of the SW 1/4 of the NE 1/4, Section 18, T-5-N, R-15-W and run South 89 Degrees 34 Minutes 24 Seconds East 489.41' to a point, thence run S06°46'09"W 70.48' to a Set Rebar for the Point of Beginning, thence run S04°02'57"E 134.55' to a Set Rebar, thence run along an arc with a Radius of 370.00', a length of 67.90', a Chord of 67.81', and a Chord Bearing of S75°53'18"W to a Set Rebar, thence run S81°08'45"W 118.29' to a Set Rebar, thence run along an arc with a Radius of 20.00', a Length of 35.03', a Chord of 30.72', and a Chord Bearing of N48°40'28"W to a Set Rebar, thence run S01°23'04"W 102.42' to a Set Rebar, thence run along an arc with a Radius of 20.00', a Length of 28.60', a Chord of 26.22', and a Chord Bearing of N40°10'48"E to a Set Rebar, thence run N81°09'45"E 136.37' to a Set Rebar, thence run along an arc with a Radius of 430.00', a Length of 33.29', a Chord of 33.28', and a Chord Bearing of N78°55'40"E to a Set Rebar, thence run S26°46'43"E 209.69' to a Set Rebar, thence run N63°25'25"E 155.57' to a Set Rebar, thence run N26°34'35"W 201.44' to a Set Rebar, thence run along an arc with a Radius of 430.00', a Length of 30.44', a Chord of 30.43', and a Chord Bearing of N53°42'44"E to a Set Rebar, thence run S26°34'35"E 206.38' to a Set Rebar, thence run N63°25'25"E 108.45' to a Set Rebar, thence run N03°30'49"E 115.86' to a Set Rebar, thence run N81°09'45"E 165.49' to a Set Rebar, thence run along an arc with a Radius of 230.00', a Length of 123.12', a Chord of 121.65', and a Chord Bearing of N18°08'09"E to a Set Rebar, thence run along an arc with a Radius of 230.00', a Length of 46.75', a Chord of 46.67', and a Chord Bearing of N03°01'23"W to a Set Rebar, thence run N08°50'48"W 60.71' to a Set Rebar, thence run N75°35'07"E 126.26' to a Set Rebar, thence run N87°27'19"E 39.23' to a Set Rebar, thence run N04°22'31"W 112.43' to a Set Rebar, thence run N04°22'31"E 13.82' to a Set Rebar, thence run N04°22'31"W 149.54' to a Set Rebar, thence run N40°38'37"W 90.60' to a Set Rebar, thence run N07°01'44"W 111.62' to a Set Rebar, thence run N88°54'50"W 267.68' to a Set Rebar, thence run S38°58'09"W 87.46' to a Set Rebar, thence run S00°53'33"E 147.87' to a Set Rebar, thence run S74°40'19"W 39.44' to a Set Rebar, thence run S04°14'05"E 473.38' to a Set Rebar, thence run S06°46'09"W 143.49' back to the Point of Beginning. Containing 9.58 Acres more or less and all being in SW 1/4 of the NE 1/4, the SE 1/4 of the NE 1/4 and the NW 1/4 of the SE 1/4, Section 18, T-5-N, R-15-W, Lamar County, Mississippi.

THE SOUTHEAST CORNER OF THE SOUTHWEST 1/4 OF SECTION 18, TOWNSHIP 5 NORTH, RANGE 15 WEST, LAMAR COUNTY, MISSISSIPPI TO THE PINE KNOT

OWNERS CERTIFICATE
 State of Mississippi
 I, the undersigned, certify that the above described property is and for the said county and state, on this day of _____ 2008, was duly surveyed and the plat hereon is a correct representation of the same as the same was surveyed and the plat hereon is a correct copy of each other.

ACKNOWLEDGMENT
 State of Mississippi
 I, _____, do hereby certify that the above described property is and for the said county and state, on this day of _____ 2008, was duly surveyed and the plat hereon is a correct representation of the same as the same was surveyed and the plat hereon is a correct copy of each other.

NOTARY PUBLIC
 VINCE L. HAVARD
 State of Mississippi
 County of Lamar

MY COMMISSION EXPIRES: _____

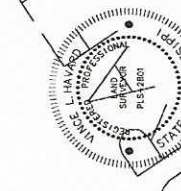
SURVEYOR'S CERTIFICATE:
 State of Mississippi
 County of Lamar

VERIFICATION
 State of Mississippi
 County of Lamar

ACKNOWLEDGMENT
 State of Mississippi
 I, _____, do hereby certify that the above described property is and for the said county and state, on this day of _____ 2008, was duly surveyed and the plat hereon is a correct representation of the same as the same was surveyed and the plat hereon is a correct copy of each other.

PLANNING DEPARTMENT CERTIFICATE:
 I hereby certify that the above described property is and for the said county and state, on this day of _____ 2008, was duly surveyed and the plat hereon is a correct representation of the same as the same was surveyed and the plat hereon is a correct copy of each other.

COUNTY ENGINEER'S FINAL APPROVAL FOR MAINTENANCE:
 I hereby certify that the above described property is and for the said county and state, on this day of _____ 2008, was duly surveyed and the plat hereon is a correct representation of the same as the same was surveyed and the plat hereon is a correct copy of each other.



HAVARD LAND SURVEYING P.A.
 6652 U.S. HIGHWAY 69 • Hattiesburg, Mississippi 39402
 Phone: (601) 261-9784 • Fax: (601) 261-5573

PLANNING DEPARTMENT CERTIFICATE:
 I hereby certify that the above described property is and for the said county and state, on this day of _____ 2008, was duly surveyed and the plat hereon is a correct representation of the same as the same was surveyed and the plat hereon is a correct copy of each other.

COUNTY ENGINEER'S FINAL APPROVAL FOR MAINTENANCE:
 I hereby certify that the above described property is and for the said county and state, on this day of _____ 2008, was duly surveyed and the plat hereon is a correct representation of the same as the same was surveyed and the plat hereon is a correct copy of each other.

PLANNING DEPARTMENT CERTIFICATE:
 I hereby certify that the above described property is and for the said county and state, on this day of _____ 2008, was duly surveyed and the plat hereon is a correct representation of the same as the same was surveyed and the plat hereon is a correct copy of each other.

COUNTY ENGINEER'S FINAL APPROVAL FOR MAINTENANCE:
 I hereby certify that the above described property is and for the said county and state, on this day of _____ 2008, was duly surveyed and the plat hereon is a correct representation of the same as the same was surveyed and the plat hereon is a correct copy of each other.

PLANNING DEPARTMENT CERTIFICATE:
 I hereby certify that the above described property is and for the said county and state, on this day of _____ 2008, was duly surveyed and the plat hereon is a correct representation of the same as the same was surveyed and the plat hereon is a correct copy of each other.

COUNTY ENGINEER'S FINAL APPROVAL FOR MAINTENANCE:
 I hereby certify that the above described property is and for the said county and state, on this day of _____ 2008, was duly surveyed and the plat hereon is a correct representation of the same as the same was surveyed and the plat hereon is a correct copy of each other.

President, Lamar County Board of Supervisors

President, Lamar County Board of Supervisors

County Engineer